

LIKELY TO BITE?

ANY DOG CAN BITE! BE SAFE AROUND THEM!

Dogs are more likely to bite when the dog is protecting something or is hurt or afraid

Complete the following safety tips by filling in the missing words from the Word Box

**Word
Box**

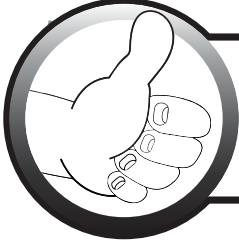
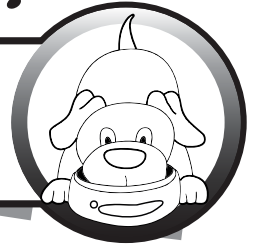
Know / Tease / Face / Smile / Puppies / Gently / Climb / Eating / Sleeping
/ Seeing / Touch / Friendly / Tail

COLOUR ME IN WHEN YOU'RE FINISHED!!!



Don't approach a dog you don't _____.

Don't bother a dog who is busy _____ or chewing his toy.



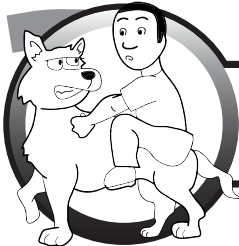
First ask permission from the owner to _____ the dog.

Leave a mommy dog alone that is busy caring for her _____.



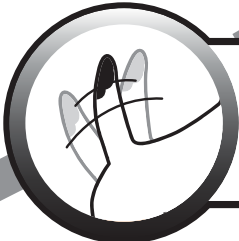
Don't _____ at dogs. Aggressive dogs see you baring teeth for a fight.

Should a dog allow you to touch him, do so _____.



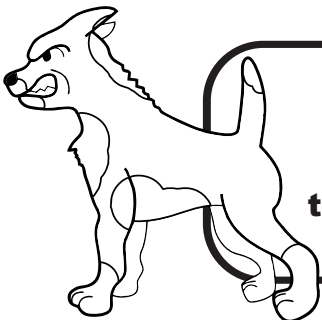
Never _____ on dogs!

Never sneak up on a _____ dog and don't touch a dog without them _____ you first.



A wagging _____ does not always mean a dog is _____.

Don't put your _____ close to a dog's face. Dog's don't really like hugs and kisses.



Look out for warning signs like: Growling, snarling, baring teeth, tense body, stiff tail and pulled back ears.

Never _____ a dog!



Email: educate@aacl-jhbnb.co.za



AAACL
CARE AND PROTECTION
(EST. 1956) NPO 000-560 / PBO 930006842
Johannesburg